



This virtual window shows how good this premises can look.  
Could your business thrive here?

**This unit is available to rent or buy.**



Information kindly provided by the Coalville Heritage Society  
[coalville-heritage.info/home.html](http://coalville-heritage.info/home.html)



To Let  
Retail Unit  
jarroms  
0116 222 1999

FREE PHONE UNLOCKING  
SIM CARDS  
BATTERY & BLUETOOTH

NORTH  
CLEAN YOUR



This virtual window shows how good this premises can look.  
Could your business thrive here?  
**This unit is available to rent or buy.**



Historic images and information kindly provided by the Coalville Heritage Society  
[www.coalville-heritage.info/home.html](http://www.coalville-heritage.info/home.html)





To Let

Retail Unit

jarroms

0116 222 1999

2A

HOTEL STREET CIRCA 1915

Get your own space above your garage, convert it into a second business space!  
This unit is available to rent or buy.  
CFS  
www.cfs.co.uk





## APPENDIX B

### REDISCOVER COALVILLE

Located in the heart of the National Forest, Coalville is steeped in history and full of hidden gems to discover.

Once a thriving coal mining town, today Coalville boasts plenty of modern attractions, shops and places to eat to keep you and your family entertained.

So go on, what are you waiting for?

Enjoy.



### 15 THINGS TO DO IN AND AROUND COALVILLE

- Shop till you drop**  
With high street names and independent shops, you are sure to find what you are looking for.
- Get some light refreshment**  
Sample Coalville's culinary delights at one of our many cafés, pubs and restaurants.
- Explore the great outdoors**  
Coalville boasts a number of country parks, open spaces and nature reserves within easy reach. With short, medium, long and easy access walks, there is something for all abilities and wheelchair users, where you can discover our diverse scenery. [www.nwleics.gov.uk/parks](http://www.nwleics.gov.uk/parks)
- See a show**  
The Century Theatre ([www.centurytheatre.co.uk](http://www.centurytheatre.co.uk)), Britain's oldest surviving travelling theatre, now has its permanent home in Coalville. It is truly a unique venue, hosting a range of shows, live music and films.
- Roll up to the traditional market**  
Get good value, quality fresh produce and something a little different from Coalville's traditional indoor market ([www.nwleics.gov.uk/coalville\\_market](http://www.nwleics.gov.uk/coalville_market)). Runs Tuesdays (half-day), Fridays and Saturdays.
- Go back in time**  
Take a walk back in time and visit The 1620s House and Gardens ([www.doningtonleheath.org.uk](http://www.doningtonleheath.org.uk)), Grace Dieu Priory ([www.gracedieupriory.org.uk](http://www.gracedieupriory.org.uk)), the unique abbey Mount St Bernard Abbey ([www.mountsaintbernard.org](http://www.mountsaintbernard.org)) or the award winning Hough Mill ([www.swannington\\_hough\\_windmill.html](http://www.swannington-heritage.co.uk/swannington_hough_windmill.html)). These historical landmarks are a must-see.
- Get sporty**  
Whether playing or watching is your thing, Coalville offers a great range of sport clubs and activities for you to choose from – football, rugby, hockey and tennis to name a few.
- Have a little leisure time**  
Hermitage Leisure Centre offers a fitness and health suite, café, range of events and of course a great swimming pool!
- Celebrate our history**  
Take in the Coalville of the past along the Mining Heritage Trail ([www.coleorton.org.uk/coalville-miners-heritage-trail.pdf](http://www.coleorton.org.uk/coalville-miners-heritage-trail.pdf)), a circular trail of approximately nine miles, which celebrates the town's heritage.
- Get lost in the forest**  
Coalville sits right in the heart of the National Forest, which comprises 200 square miles of woodland. With 8.5million new trees planted over the last 25 years and lots of activities and events, there are plenty of things to see, do and discover.
- Let us entertain you**  
The Victoria Bikers Pub ([www.vicbikerspub.co.uk](http://www.vicbikerspub.co.uk)) and The Emporium ([www.emporium-club.com](http://www.emporium-club.com)) are two local spots that attract visitors far and wide. If you want to listen to music and have a drink and chat amongst friends, The Vic could be for you (and don't worry, you don't have to be a biker!). Whereas The Emporium is one of the Midlands' most legendary nightclubs. Recently refurbished, the club is bringing the best of the next generation dance scene back to Coalville.
- Get on your bike**  
A great place to get out and about on your bike, Coalville's many cycle paths link to National Cycle Route 52. Visit [www.nwleics.gov.uk/cycle\\_routes](http://www.nwleics.gov.uk/cycle_routes) for details of routes in and around the area.
- Find our art hot spots**  
Take our art trail to discover incredible sculptures, statues, and mosaics ([www.nwleics.gov.uk/coalville\\_public\\_art\\_trail](http://www.nwleics.gov.uk/coalville_public_art_trail)).
- Enjoy a picnic in the park**  
Coalville enjoys many parks and recreation grounds. With children's play areas, skateboard parks, outdoor gyms, tennis courts, mini golf, bowling greens and picnic areas, there is plenty to discover and do.
- Play softly**  
For younger kids, Coalville has some fantastic soft play centres to keep them entertained for an hour or two.



### CLUBS & ASSOCIATIONS

- |  |   |
|--|---|
| <p><b>Coalville and District Male Voice Choir</b><br/><a href="http://www.coalvillemvc.co.uk/">www.coalvillemvc.co.uk/</a></p> <p><b>Coalville Triathlon Club</b><br/><a href="http://www.coalvilletriathlon.co.uk/contact.htm">www.coalvilletriathlon.co.uk/contact.htm</a></p> <p><b>Coalville Stroke Club</b><br/><a href="http://www.stroke.org.uk/finding-support/coalville-stroke-club">www.stroke.org.uk/finding-support/coalville-stroke-club</a></p> <p><b>Coalville Adult School Drama Group</b><br/><a href="http://www.casdg.co.uk/">www.casdg.co.uk/</a></p> <p><b>Coalville Light Orchestra</b><br/><a href="http://www.coalvilleglightorchestra.webs.com/">www.coalvilleglightorchestra.webs.com/</a></p> <p><b>Coalville &amp; District Photographic Society</b><br/><a href="http://www.sinwp.com/camera_clubs/Coalville-and-District-Photographic-Society-189.htm">www.sinwp.com/camera_clubs/Coalville-and-District-Photographic-Society-189.htm</a></p> <p><b>Coalville Heritage Society</b><br/><a href="http://www.coalville-heritage.info/home.html">www.coalville-heritage.info/home.html</a></p> <p><b>1188 Coalville Squadron Air Training Corps</b><br/><a href="http://www.1188sqnafc.co.uk/">www.1188sqnafc.co.uk/</a></p> <p><b>Coalville Gym Club</b><br/><a href="http://www.coalvillegymnasticsclub.co.uk/">www.coalvillegymnasticsclub.co.uk/</a></p> <p><b>Coalville Swimming Club</b><br/><a href="http://www.coalvillesc.org.uk/">www.coalvillesc.org.uk/</a></p> <p><b>Coalville Town Hockey Club</b><br/><a href="http://www.coalvilletownhcc.co.uk/">www.coalvilletownhcc.co.uk/</a></p> <p><b>Coalville Rotary Club</b><br/><a href="http://www.coalvillerotaryclub.co.uk/">www.coalvillerotaryclub.co.uk/</a></p> <p><b>Coalville Rugby Football Club</b><br/><a href="http://www.pitchero.com/clubs/coalville">www.pitchero.com/clubs/coalville</a></p> | <p><b>Coalville Army Cadets</b><br/><a href="http://www.armycadets.com/county/leicestershire-northamptonshire-and-rutland-act/about-our-county/f-squadron/coalville/">www.armycadets.com/county/leicestershire-northamptonshire-and-rutland-act/about-our-county/f-squadron/coalville/</a></p> <p><b>Broomleys Cricket Club</b><br/><a href="http://www.broomleyscricket.hitscricket.com/default.aspx">www.broomleyscricket.hitscricket.com/default.aspx</a></p> <p><b>Charnwood Flower Guild</b><br/><a href="http://www.nafas.org.uk/clubs/charnwood-flower-guild/">www.nafas.org.uk/clubs/charnwood-flower-guild/</a></p> <p><b>Coalville Town Bowling Club</b><br/><a href="http://www.coalvilletownbowlsclub.webs.com/">www.coalvilletownbowlsclub.webs.com/</a></p> <p><b>Confidence Academy of Martial Arts</b><br/><a href="http://www.confidence-academy.co.uk/">www.confidence-academy.co.uk/</a></p> <p><b>Leicester Ju Jitsu – Coalville</b><br/><a href="http://www.leicesterjujitsu.co.uk/index.php/coalville-friday">www.leicesterjujitsu.co.uk/index.php/coalville-friday</a></p> <p><b>Stealth Black Belt Academy</b><br/><a href="http://www.stealth-uk.co.uk/">www.stealth-uk.co.uk/</a></p> <p><b>Coalville Town Football Club</b><br/><a href="http://www.coalvilletownffc.co.uk">www.coalvilletownffc.co.uk</a></p> <p><b>Coalville Amateur Operatic Society</b><br/><a href="http://www.caos.org.uk/">www.caos.org.uk/</a></p> <p><b>Coalville &amp; District Ramblers</b><br/><a href="http://www.ramblers.org.uk/coalville">www.ramblers.org.uk/coalville</a></p> <p><b>Girl Guides – Coalville Division</b><br/><a href="http://www.leicestershireguides.org">www.leicestershireguides.org</a></p> <p><b>4th Coalville Scout Group</b><br/><a href="http://www.scouts.org.uk/get-involved/groups/4th-coalville/#panel1-1">www.scouts.org.uk/get-involved/groups/4th-coalville/#panel1-1</a></p> |
|--|---|

### KEY CONTACTS

For the latest events and what's on guide, visit [www.nwleics.gov.uk/whatson](http://www.nwleics.gov.uk/whatson). You can also contact the Tourist Information Centre at:

w: [www.goleicestershire.com/Ashby-and-Coalville](http://www.goleicestershire.com/Ashby-and-Coalville)  
t: 01530 411767  
a: North Street, Ashby de la Zouch, LE65 1HU

**Opening times:**  
Monday, Tuesday, Thursday and Friday 10am - 5pm  
Saturday 10am - 1pm

You will also find lots of information and leaflets in the Market Hall.

### FAST FACTS



Coalville is a former mining town.

It is also home to Action Man, Star Wars and Care Bears (Palitoy Ltd of Coalville). **1966** Action Man was created.



**1926** Coalville Town Football Club was formed in 1926 as Ravenstone Miners Athletic.



**1914-1918** The first 50 volunteer soldiers to head to World War I were from Hugglescote and left from Coalville station.



**1829** Robert Stephenson developed the Rocket steam engine and built one of the world's first railways, from Leicester to Swannington. His family founded the Snibston mine.



**1824** Deep coalmining was pioneered by William Stenson, who sank the first deep mine at Whitwick.

**32,000**

It's the largest town in North West Leicestershire, with a population of 32,000 and is twinned with Romans-sur-Isère, a town with a population of over 32,000 in South East France.



**32,000**



**21m**

The height of clock tower is 21m (68ft) above pavement level.

### COALVILLE ART

Look out for Coalville's wonderful sculptures, statues and mosaics and paintings as you wander around the town.

You can find the following art hot spots marked on the map overleaf. Simply look for these numbers.

- Irish Elk Snibston**
- Memorial Square Panels**
- Mother and Child Statue**
- Miners' Statue**
- Phoenix Green Mural**
- Sustrans Phoenix Green Milepost**

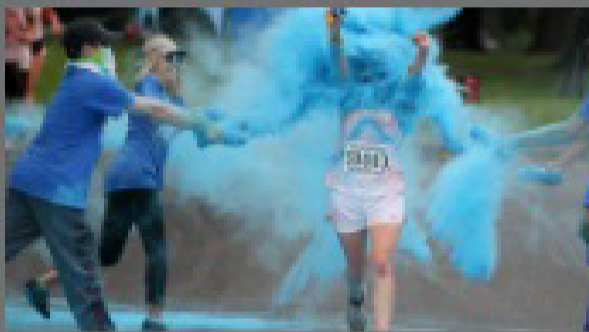
Mosaics are located at Coalville Library, The Springboard Centre, Coalville Health Centre, The Marlene Reid Centre, Hermitage FM Café, Coalville Market Hall and Belvoir Shopping Centre.

For more information on Coalville's art visit [www.nwleics.gov.uk/coalville\\_public\\_art\\_trail](http://www.nwleics.gov.uk/coalville_public_art_trail)

BE PART OF COALVILLE'S  
EXCITING FUTURE

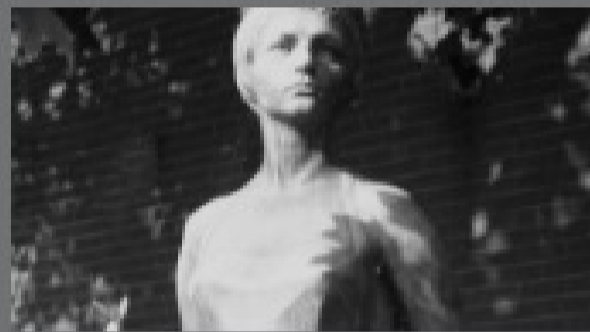


ChooseCoalville ChooseCoalville www.choosecoalville.co.uk



### Colour Run

Coalville is getting splashed with colour this Sunday! Find out more about our first-ever Colour Run.



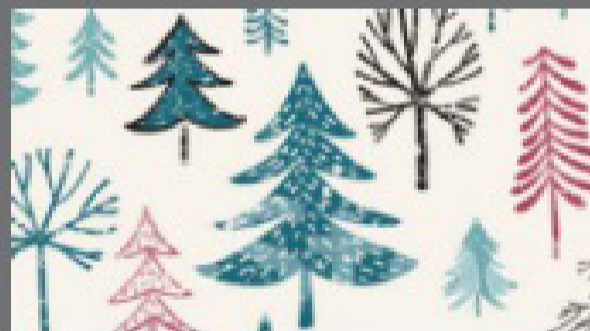
### Brand new town guide

View the exciting new pocket guide to Coalville.



### Coalville Heroes

Do you want to become a hero? Find out more.



### The C word

It might be early but let's talk Christmas.



### Did you know?

Discover historic highlights and interesting facts about our town.



### Dates for your diary


Don't miss out on what's coming up.

Choose Coalville  
134 likes

Liked

Choose Coalville shared  
Community Capacity Building Project - CCB's event.  
4 hrs

Great to see this coming together - why not get involved if you live in #Coalville and you're interested in #gardening and #foodgrowing!



13 Castle...  
13 Sept...

Tweets by @ChooseCoalville

Choose Coalville @ChooseCoalville

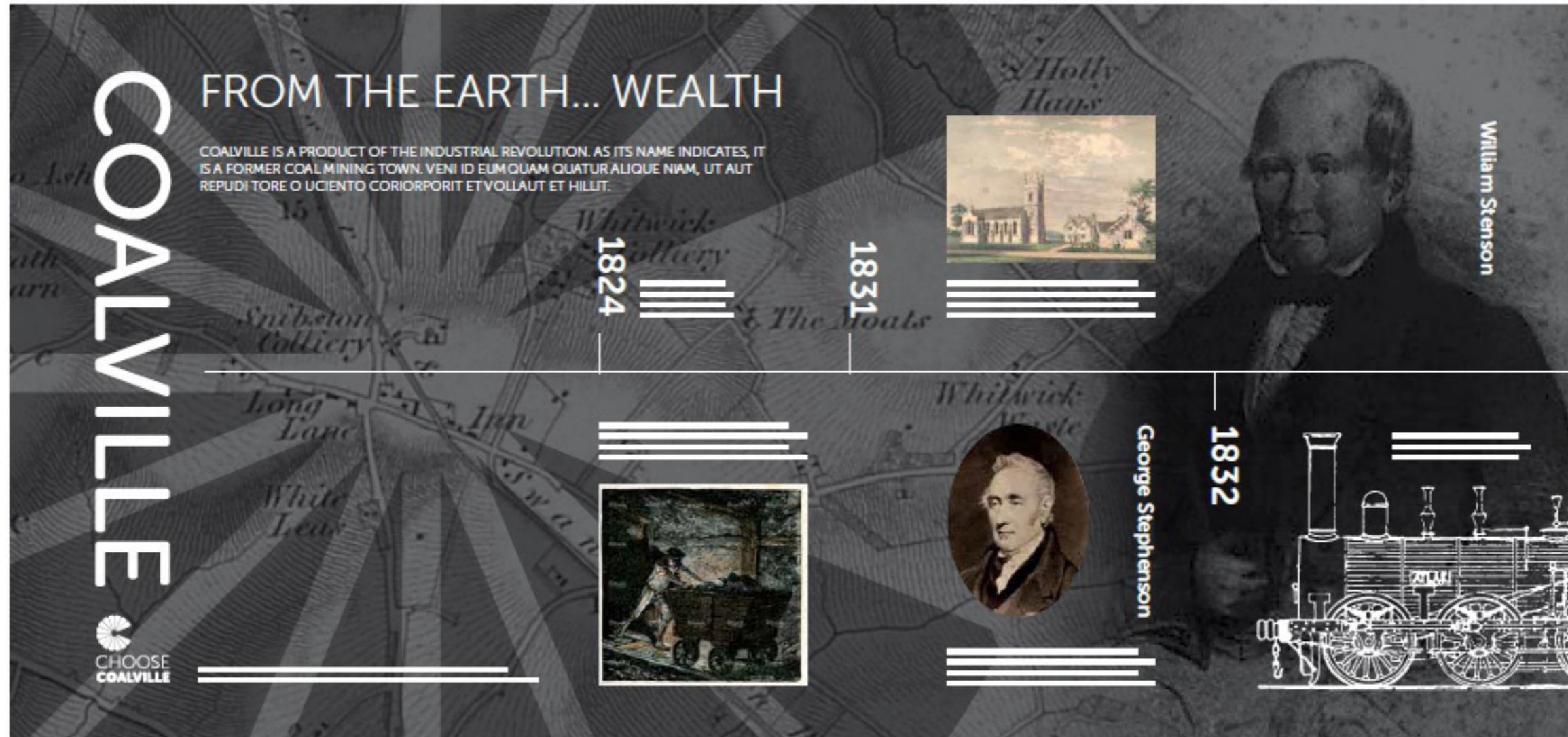
Welcome to @ChooseCoalville! We're all about celebrating our vibrant town!

Load more Tweets

Embed View on Twitter



APPENDIX D



brand awareness: heritage site hoarding boards

Slide 11. Building Hoardings  
Suggestion on how building hoardings might be utilised to promote the town's rich history and its many achievements through the ages.





APPENDIX E

